

The **21** Point Guide To Better Worship Slides

—— PRESENTED BY ——

CMG | CHURCH
MOTION
GRAPHICS

About This Guide

Worship slides, also known as lyric slides, are an extremely valuable part of the modern church experience. They enable regular attendees and newcomers alike to comfortably sing along with the band as they lead in moments of praise.

Many churches struggle to create worship slides that both look good and work well for their audience. It doesn't have to be this way, though. Some of the most obvious mistakes are the easiest to correct.

This guide is designed to take you step-by-step in improving your church's worship slides. Each step will make a difference in the media of nearly any ministry—regardless of your style, budget or skill level.

About Church Motion Graphics

CMG is a ministry-focused design studio dedicated to creating eye-catching background graphics, videos and templates that are specifically designed to look great in worship environments. CMG content is perfect for displaying behind worship lyrics, announcement slides, sermon notes or when shown alone. All of the background images used in this guide's examples can be found at ChurchMotionGraphics.com

Split Each Song Into Slides Separated By Part (Verse, Chorus, Etc.)

Make it easy to navigate your slides by organizing each song into sections based on the unique parts of the lyrics. For extra clarity, label each of these parts on the user-end.

Verse One

Verse Two

Amazing grace
how sweet the sound
That saved a wretch like me
I once was lost
but now am found
Was blind, but now I see
'Twas grace that taught



Amazing grace
how sweet the sound



'Twas grace that
taught my heart to fear



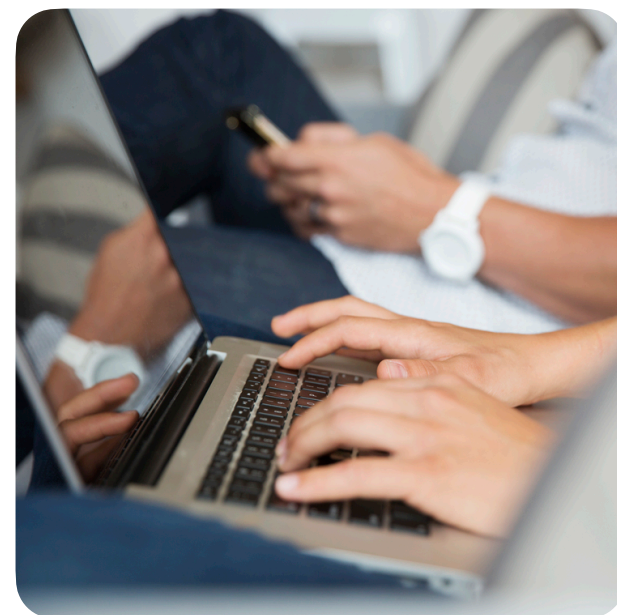
Arrange Your Lyrics In The Order That They Will Be Sung

Take the guesswork out of running lyrics by placing them in the exact order that your worship team will sing them. This allows you to click with confidence.



Our band performs songs in the same arrangement 9 out of 10 times. It just makes sense to order our lyric slides the same.

TJ Wallace
Worship Leader



Adjust Lines To Be Balanced In Length

Sometimes called “widows and orphans,” you should avoid some lines of text being significantly larger than others. While still maintaining musical phrasing, keep the shape of your lines similar.

**Amazing
grace how sweet the sound
That saved a wretch like
me**



**Amazing grace
how sweet the sound
That saved a wretch
like me**



4

Insert Blank Slides Where There Are Pauses Or Instrumentals

If no lyrics are being sung, your slide should be blank. Clear lyrics off of your screen during pauses to avoid confusion.



Use instrumentals as moments to shift the focus away from lyrics and onto imagery.

Matt Elliott
Video Director



5

Erase Any Slide Labels Or Instructions (Bridge, Repeat 3X, Unison, Etc.)

While these instructions are helpful for vocalists on music sheets, they add a lot of clutter to your screens. Avoid the distraction for your audience by cutting them and letting the worship team lead instead.

**Verse One:
Amazing grace
how sweet the sound
(Repeat)**



**Amazing grace
how sweet the sound**



Remove Periods At The End Of Sentences

Lyrics do not require periods like in traditional writing. Allow line breaks to substitute for punctuation. Exclamation points and question marks can be acceptable, though.

**Amazing grace
how sweet the sound.**



**Amazing grace
how sweet the sound**



Remove Unnecessary Ad Lib Musical References And Interjections (Oh, Whoa, Etc.)

These vocal elements are great to sing, but don't look very good on your screens. Delete them from your slides unless absolutely needed and let your worship team lead those parts instead.

Whoa, Oh, Oh, Oh
Jesus has risen
He is alive



Jesus has risen
He is alive



Capitalize All Names Or References To God (Jesus, Father, Him, You, etc.)

This simple change is a great way to acknowledge and bring honor to God in your slides. It also brings some clarity to those who may be unfamiliar with the song.

he is jesus
Our hope is in him



He is Jesus
Our hope is in Him



Choose A Lyric Font That's Easy To Read

It's important to be intentional about the fonts you choose. Your goal is to communicate text clearly and you should never sacrifice legibility for stylization. An easy, go-to choice for lyrics is a sans serif font such as Montserrat Bold, Gill Sans Bold, or Helvetica Neue Bold.

- **Montserrat Bold**
- **Gill Sans Bold**
- **Helvetica Neue Bold**

**Amazing grace
how sweet the
sound**



**Amazing grace
how sweet the sound**



10

Use A Consistent Font Throughout Each Song In Your Service

Once you are confident in your chosen font, stick with it. Use it not just for one song, but for everything you sing in that worship service. This familiarity brings comfort to your audience.



Consistency is one of your churches greatest tools for bringing comfort.

Dylan Hood
Worship Pastor



Choose A Text Size That Is Legible From Every Spot In Your Room

The key to choosing the right font size is to avoid going so small that your audience cannot read it, while not going so large that it breaks up the lyrics in unnatural places. Ensure that your lyrics are easily legible – even from the back row.

Amazing grace
how sweet the sound



Amazing grace
how sweet
the sound



Amazing grace
how sweet the sound



Leave Enough White Space For Your Slide To Be Visually Appealing

White space is like breathing room for your eyes. By increasing the amount of space around your lyrics, you will decrease the visual congestion and actually bring emphasis to the text. It also works well to get the most value out of your background.

**Amazing grace
how sweet the sound
That saved a
wretch like me**



**Amazing grace
how sweet the sound
That saved a
wretch like me**

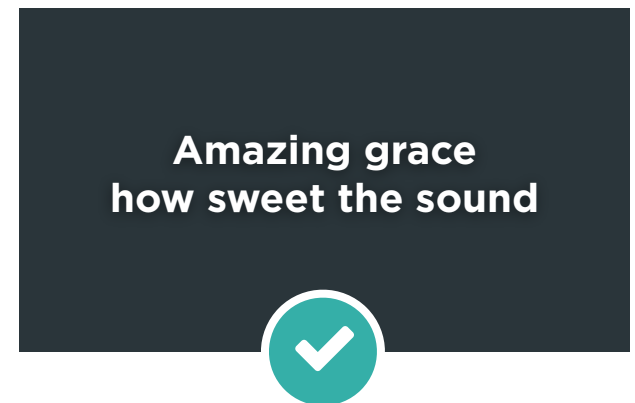
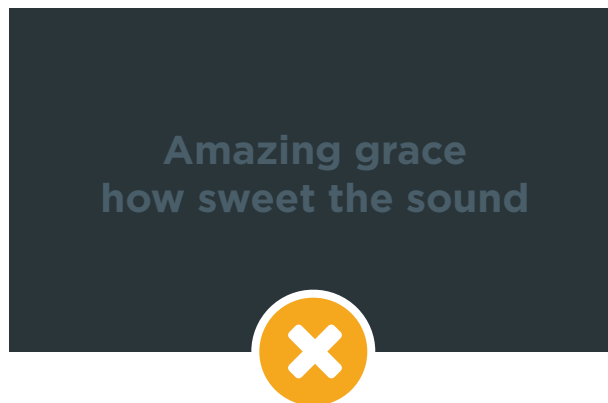
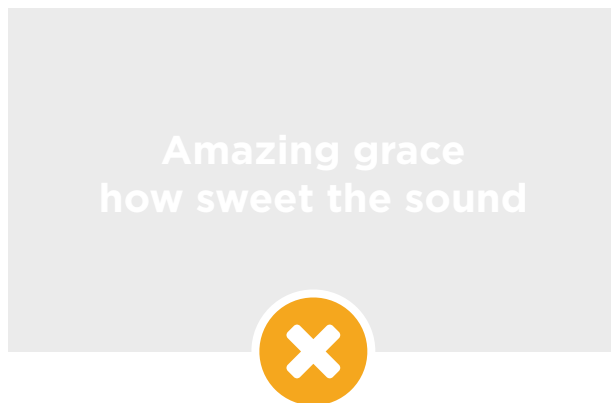


**Amazing grace
how sweet the sound**



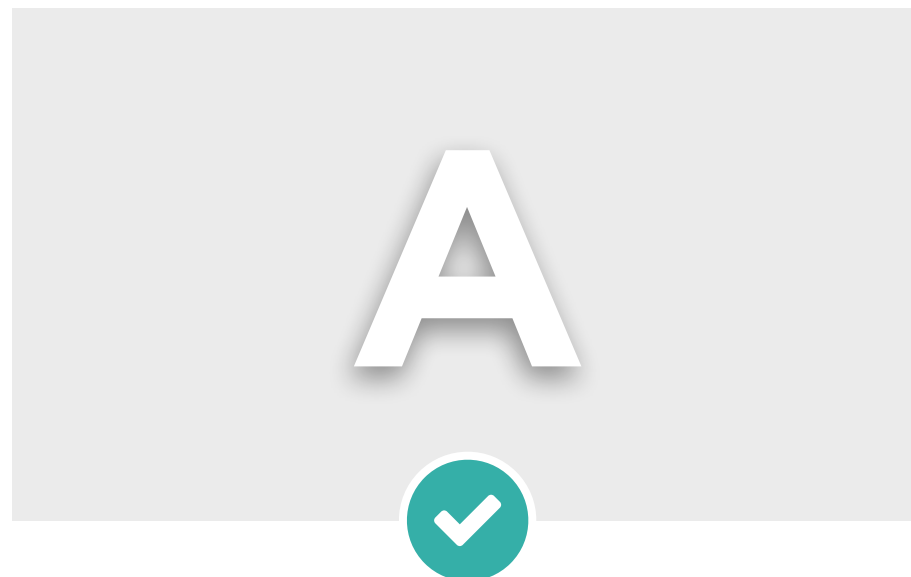
Select A Text Color That Shows Up Well On Your Backgrounds

The standard color for text on worship slides is white over a dark background. In the rare case that you use a light-colored background, a dark font color may be used. For maximum visibility, however, stick to white over dark.



Add A Drop Shadow To Your Text For Increased Visibility

Drop shadows make it easy to separate white text from backgrounds. The lighter the background, the more helpful a drop shadow can be in separating the foreground text. The standard is a blurred black shadow at a 180° drop.



Use Text Transitions That Match The Speed Of The Song

The best transitions between slides are the ones no one notices. Transitions that are too slow, out of place, abrupt, too rapid or ugly will cause distraction. Adjust the transition time for each song individually to match its unique tempo.



Smooth transitions are the 'secret sauce' of professional quality media.

Kendall Conner
Creative Pastor



Once You've Created A Perfect Look, Save It To A Template

Most presentation software includes functionality to save your slide style to a template to be used later. By creating a template, you can change the formatting of your entire song library to match your new look with ease.



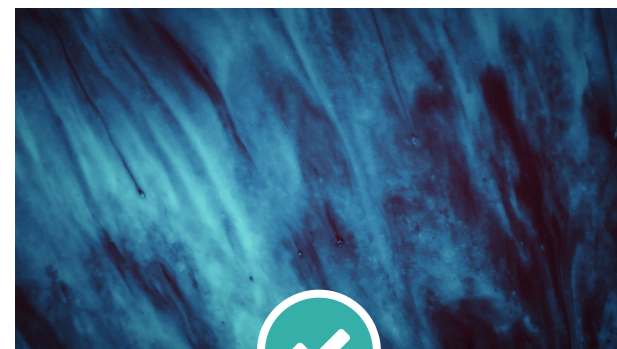
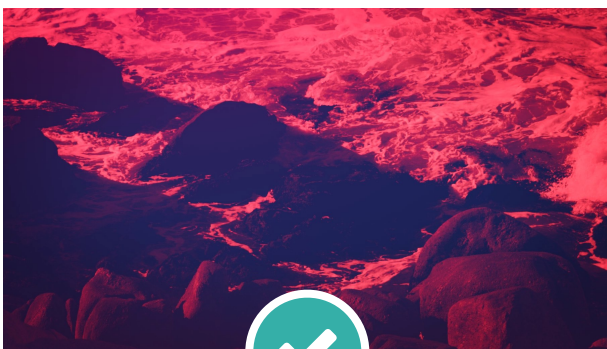
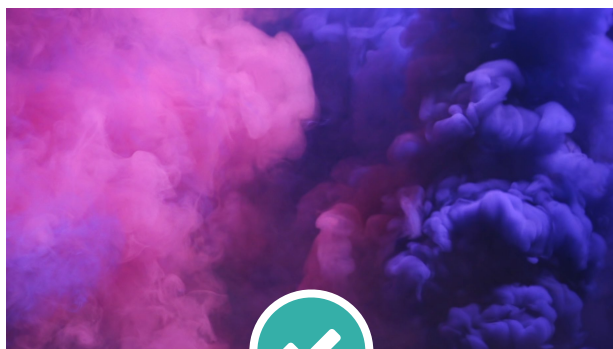
Templates make it super easy to take a great look and apply it to your whole setlist.

Josh Strange
Creative Pastor



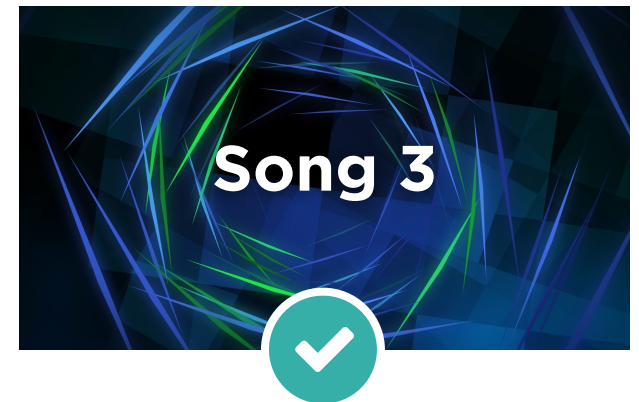
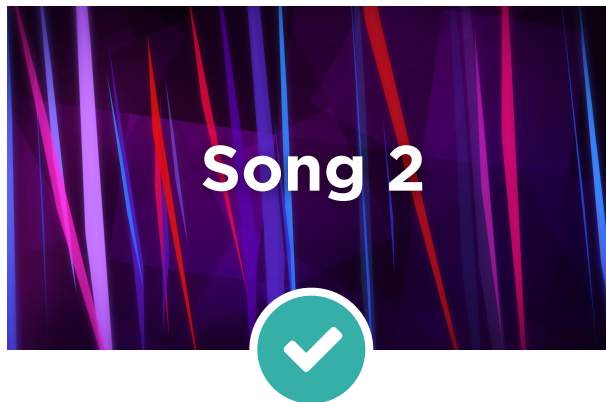
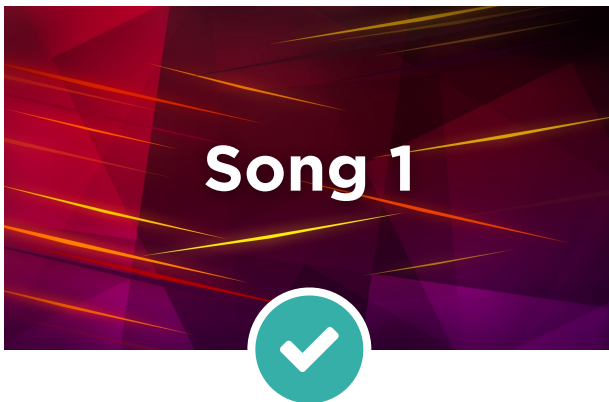
Use Motion Backgrounds To Create A Dynamic Visual Experience

Motion backgrounds are the easiest way to bring fresh life to your worship slides. They are simple to drag-and-drop into most presentation software and add an element of creativity to your services.



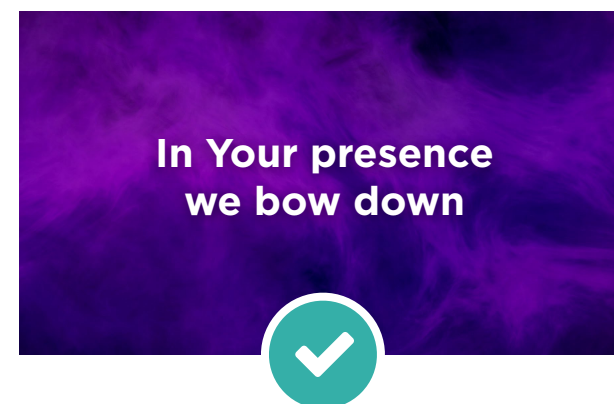
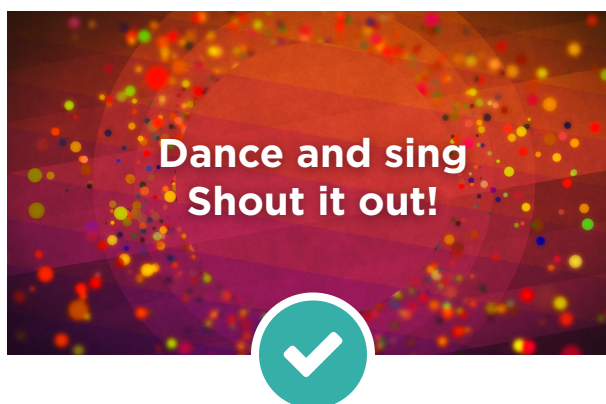
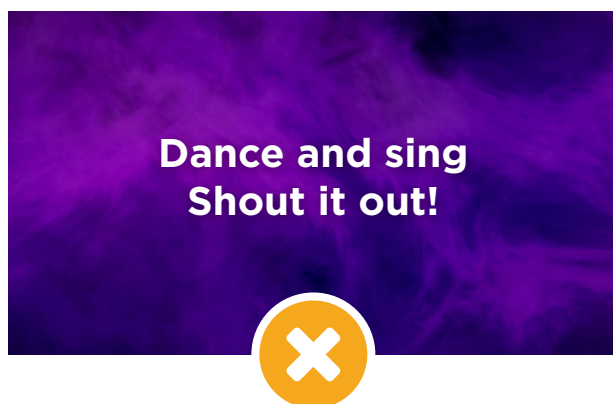
Choose At Least One Background For Each Song In Your Worship Set

Separate each song in your setlist by using a different background for each one. This allows you to take your audience on a visual journey similar to how your worship team does musically.



Select Background Colors Based On The Tone Of The Song

Aim to choose motions that complement the overall feeling of the song by choosing corresponding colors. Warm colors (red, orange, yellow) are associated with daylight and are vivid, energetic and active. Cool colors (green, blue, violet) are associated with a gray or overcast day and are calm, soothing, and relaxing.



Pick Motion Backgrounds That Match The Speed Of The Song

To avoid distraction, use fast motions for upbeat songs and slow motions for calmer songs. It helps to listen to the setlist when choosing backgrounds.



A fast, energetic motion during a slow, intimate song can kill the moment.

Caleb Hedrick
Worship Leader



Add Fresh Motion Backgrounds Regularly To Eliminate Monotony

Motions can add fresh life to your church's worship services but only when rotated frequently. Subscribe to [Church Motion Graphics](#) to receive a fresh sets of motion backgrounds regularly.

